



RANGE OF MARINE PROPULSION SYSTEMS FROM 10 TO 2000 HP & GENERATORS FROM 6 TO 500 KW

TAILORED BEST

MARINE SYSTEMS SINCE 1952

ESTABLISHED IN FRANCE



POWERED BY NANNI

POWER BOATS SHAFT LINE

TAILORED BEST

MARINE SYSTEMS SINCE 1962

DESIGNED IN FRANCE



NANNI REFERENCES

ANTARES 7



SHIPYARD	BENETEAU
TYPE	Pleasure Boat
LENGTH (M)	6,99
WIDTH (M)	
WEIGHT (T)	3,56
ENGINE	T4.155, 155 hp at 3600 rpm
GEARBOX	ZF 45 A Ratio 2,43 / 1
TRANSMISSION	Shaft line
SPEED (KTS)	21

TAILORED BEST

MARINE SYSTEMS SINCE 1962

DESIGNÉ EN FRANCE



NANNI REFERENCES – POWER BOATS

ANTARES 8



SHIPYARD	BENETEAU
TYPE	Pleasure Boat
LENGTH (M)	7,49
WIDTH (M)	2,50
WEIGHT (T)	4,58
ENGINE	T4.200, 200 hp at 3400 rpm
GEARBOX	TTM 40 A Ratio 2,45 / 1
TRANSMISSION	Shaft line
SPEED (KTS)	20



ANTARES 9



SHIPYARD	BENETEAU
TYPE	Pleasure Boat
LENGTH (M)	9,18
WIDTH (M)	3,10
WEIGHT (T)	5,33
ENGINE	6.420 TDI, 320 hp at 3600 rpm
GEARBOX	TTM 50 A Ratio 2,13 / 1
TRANSMISSION	Shaft line
SPEED (KTS)	25

TAILORED BEST

MARINE SYSTEMS SINCE 1962

DESIGNER IN FRANCE



NANNI REFERENCES – POWER BOATS

ANTARES 980



SHIPYARD	BENETEAU
TYPE	Pleasure Boat
LENGTH (M)	9,95
WIDTH (M)	3
WEIGHT (T)	7,02
ENGINE	2X T4.200, 200 hp at 3400 rpm
GEARBOX	TTM 40 A Ratio 2,45 / 1
TRANSMISSION	Shaft line
SPEED (KTS)	26



COUACH HORNET



SHIPYARD	COUACH
TYPE	Pleasure Boat
LENGTH (M)	13,65
WIDTH (M)	3,80
WEIGHT (T)	11
ENGINE	2 x R6-800, 800 hp
GEARBOX	
TRANSMISSION	Shaft line
SPEED (KTS)	52

TAILORED BEST

MARINE SYSTEMS SINCE 1962

DESIGNER IN FRANCE



NANNI REFERENCES – POWER BOATS

DELPHIA 989 PLATINUM



SHIPYARD	DELPHIA
TYPE	Pleasure Boat
LENGTH (M)	1,38
WIDTH (M)	3,50
WEIGHT (T)	4,7
ENGINE	N4.115, 115hp at 2600 rpm
GEARBOX	
TRANSMISSION	Shaft line
SPEED (KTS)	



DELPHIA BLUE ESCAPE 1200



SHIPYARD	DELPHIA
TYPE	Pleasure Boat
LENGTH (M)	12
WIDTH (M)	4,26
WEIGHT (T)	8,50
ENGINE	2X N4.140, 135hp at 2600 rpm
GEARBOX	TTM 40 A Ratio 2,45 R
TRANSMISSION	Shaft line
SPEED (KTS)	

TAILORED BEST

MARINE SYSTEMS SINCE 1962

DESIGNER IN FRANCE



NANNI REFERENCES – POWER BOATS

ECOTROLL



SHIPYARD	
TYPE	Pleasure Boat
LENGTH (M)	11,95
WIDTH (M)	
WEIGHT (T)	10,8
ENGINE	2X N4.60, 60 hp at 2800 rpm
GEARBOX	Sail Drive
TRANSMISSION	SP60 2,16R
SPEED (KTS)	



ENKHUIZEN 744



SHIPYARD	ENKHUIZENSLOEP
TYPE	Pleasure Boat
LENGTH (M)	7,44
WIDTH (M)	
WEIGHT (T)	1,7
ENGINE	N4.80, 80hp at 2700 rpm
GEARBOX	
TRANSMISSION	Shaft line
SPEED (KTS)	

TAILORED BEST

MARINE SYSTEMS SINCE 1962

MADE IN FRANCE



NANNI REFERENCES – POWER BOATS

FOILER



SHIPYARD	ENATA
TYPE	Pleasure Boat
LENGTH (M)	9,60
WIDTH (M)	3,3 and 7,2 with foil
WEIGHT (T)	
ENGINE	2 x T8V.370
GEARBOX	
TRANSMISSION	Shaft line
SPEED (KTS)	28-40

TAILORED BEST

MARINE SYSTEMS SINCE 1962

DESIGNER IN FRANCE



NANNI REFERENCES – POWER BOATS

JORDAN BOAT



SHIPYARD	JORDAN BOAT
TYPE	Interceptor
LENGTH (M)	
WIDTH (M)	
WEIGHT (T)	
ENGINE	2 x 6.420 TDI, 320 hp at 3600 rpm
GEARBOX	
TRANSMISSION	Shaft line
SPEED (KTS)	



LAGOON - SEVENTY 8



SHIPYARD	CNB LAGOON
TYPE	Pleasure Boat
LENGTH (M)	23,80
WIDTH (M)	11
WEIGHT (T)	62,1
ENGINE	2 x N13.580
GEARBOX	ZF 325-1A
TRANSMISSION	Shaft line
SPEED (KTS)	20

TAILORED BEST

MARINE SYSTEMS SINCE 1962

DESIGNER IN FRANCE



NANNI REFERENCES – POWER BOATS

MAVRIK - BRISTOL BAY 32



SHIPYARD	MAVRIK
TYPE	Fishing Boat
LENGTH (M)	9,7
WIDTH (M)	4,2
WEIGHT (T)	
ENGINE	2 x N9.510 dual KC
GEARBOX	
TRANSMISSION	Shaft line
SPEED (KTS)	22,5

TAILORED BEST

MARINE SYSTEMS SINCE 1962

DESIGNER IN FRANCE



NANNI REFERENCES – POWER BOATS

MERRY FISHER 925



SHIPYARD	JEANNEAU
TYPE	Pleasure Boat
LENGTH (M)	9,76
WIDTH (M)	3,16
WEIGHT (T)	5,18
ENGINE	6.420 TDI, 320 hp at 3600 rpm
GEARBOX	TTM 50 A Ratio 2,43 / 1
TRANSMISSION	Shaft line
SPEED (KTS)	24



OSTREA 700 TTOP



SHIPYARD	OCQUETEAU
TYPE	Pleasure Boat
LENGTH (M)	6,92
WIDTH (M)	2,65
WEIGHT (T)	1,8
ENGINE	T4.205, 200 hp at 3600 rpm
GEARBOX	TTM 40 A Ratio 2R
TRANSMISSION	Shaft line
SPEED (KTS)	

OSTREA 700 TTOP



SHIPYARD	OCQUETEAU
TYPE	Pleasure Boat
LENGTH (M)	6,92
WIDTH (M)	2,65
WEIGHT (T)	1,8
ENGINE	T4.270, 270 hp at 3600 rpm
GEARBOX	TTM 50 A Ratio 2,13
TRANSMISSION	Shaft line
SPEED (KTS)	30

TAILORED BEST

MARINE SYSTEMS SINCE 1952

DESIGNER IN FRANCE



NANNI REFERENCES – POWER BOATS

OCQUETEAU 735



SHIPYARD	OCQUETEAU
TYPE	Pleasure Boat
LENGTH (M)	7,34
WIDTH (M)	2,80
WEIGHT (T)	2,72
ENGINE	T4.200, 200 hp at 3400 rpm
GEARBOX	TTM 40 A Ratio 2,04 / 1
TRANSMISSION	Shaft line
SPEED (KTS)	26

OCQUETEAU 815



SHIPYARD	OCQUETEAU
TYPE	Pleasure Boat
LENGTH (M)	8,03
WIDTH (M)	2,89
WEIGHT (T)	3
ENGINE	T4.200, 200 hp at 3400 rpm
GEARBOX	TTM 40 A Ratio 2,45 / 1
TRANSMISSION	Shaft line
SPEED (KTS)	23



OCQUETEAU 885



SHIPYARD	OCQUETEAU
TYPE	Pleasure Boat
LENGTH (M)	8,88
WIDTH (M)	2,95
WEIGHT (T)	4,32
ENGINE	T6.300, 305 hp at 3600 rpm
GEARBOX	TTM 50 A Ratio 2,13 / 1
TRANSMISSION	Shaft line
SPEED (KTS)	26

OCQUETEAU RANGE CRUISER 975



SHIPYARD	OCQUETEAU
TYPE	Pleasure Boat
LENGTH (M)	10
WIDTH (M)	3,42
WEIGHT (T)	5,5
ENGINE	2 x T4.205, 205 hp at 3600 rpm
GEARBOX	TTM 40 A Ratio 2,45
TRANSMISSION	Shaft line
SPEED (KTS)	28



POSITANO OPEN 38



SHIPYARD	NAUTICA ESPOSITO
TYPE	Pleasure Boat
LENGTH (M)	11,5
WIDTH (M)	
WEIGHT (T)	
ENGINE	2 x T8V.370, 370hp at 3800 rpm
GEARBOX	
TRANSMISSION	Shaft line
SPEED (KTS)	

TAILORED BEST

MARINE SYSTEMS SINCE 1962

DESIGNER IN FRANCE



NANNI REFERENCES – POWER BOATS

CALAFURIA 11



SHIPYARD	VINCENZO CATARSI MARE
TYPE	Professional Boat
LENGTH (M)	10,45
WIDTH (M)	3,70
WEIGHT (T)	8,5
ENGINE	2 x N5.230, 230 hp at 2600 rpm
GEARBOX	
TRANSMISSION	Shaft Line
SPEED (KTS)	

TAILORED BEST

MARINE SYSTEMS SINCE 1952

DESIGNER IN FRANCE



NANNI REFERENCES – POWER BOATS

RAIDER 35



SHIPYARD	ALLEGRO YACHT
TYPE	Pleasure Boat
LENGTH (M)	10,5
WIDTH (M)	3,55
WEIGHT (T)	
ENGINE	2 x N4.140 135hp at 2600 rpm
GEARBOX	
TRANSMISSION	Shaft line
SPEED (KTS)	



RANGE BOAT 39



SHIPYARD	ARMOR BOAT
TYPE	Pleasure Boat
LENGTH (M)	11,99
WIDTH (M)	3,3
WEIGHT (T)	5,87
ENGINE	T4.200, 200 hp at 3400 rpm
GEARBOX	ZF 45 A Ratio 2,43 / 1
TRANSMISSION	Shaft line
SPEED (KTS)	23



RHEA 730 TIMONIER



SHIPYARD	RHEA MARINE
TYPE	Pleasure Boat
LENGTH (M)	7,30
WIDTH (M)	3
WEIGHT (T)	
ENGINE	T4.205 or T4.230
GEARBOX	TTM 40A
TRANSMISSION	Shaftline
SPEED (KTS)	

RHEA 850 TIMONIER



SHIPYARD	RHEA MARINE
TYPE	Pleasure Boat
LENGTH (M)	8,50
WIDTH (M)	3,30
WEIGHT (T)	
ENGINE	2 x T4.230
GEARBOX	TTM 40A
TRANSMISSION	Shaftline
SPEED (KTS)	

ST 840 CRUISER



SHIPYARD	ST BOAT
TYPE	Pleasure Boat
LENGTH (M)	8,40
WIDTH (M)	2,98
WEIGHT (T)	3,84
ENGINE	T6.280, 280 hp at 3600 rpm
GEARBOX	ZF 63 A Ratio 2,037 / 1
TRANSMISSION	Shaft line
SPEED (KTS)	28

TAILORED BEST

MARINE SYSTEMS SINCE 1962

DESIGNER IN FRANCE



NANNI REFERENCES – POWER BOATS

POWER BOATS STERN DRIVE

TAILORED BEST

MARINE SYSTEMS SINCE 1962

DESIGNER IN FRANCE



NANNI REFERENCES – POWER BOATS

ORKA 6.8M



SHIPYARD	ATLANTIC CONCEPT
TYPE	Pleasure Boat
LENGTH (M)	6,80
WIDTH (M)	2,60
WEIGHT (T)	2,13
ENGINE	Z4.200, 200 hp at 3400 rpm
GEARBOX	Stern Drive
TRANSMISSION	Bravo 3 Ratio 1,81 /1
SPEED (KTS)	32



ORKA 800



SHIPYARD	ATLANTIC CONCEPT
TYPE	Pleasure Boat
LENGTH (M)	8,20
WIDTH (M)	2,78
WEIGHT (T)	2,53
ENGINE	Z6.300, 275 hp at 3600 rpm
GEARBOX	Stern Drive
TRANSMISSION	Bravo 3 Ratio 1,81 /1
SPEED (KTS)	34

TAILORED BEST

MARINE SYSTEMS SINCE 1962

DESIGNER IN FRANCE



NANNI REFERENCES – POWER BOATS

PICNIC



SHIPYARD	DUBOURDIEU
TYPE	Pleasure Boat
LENGTH (M)	12
WIDTH (M)	
WEIGHT (T)	8
ENGINE	2X Z6.300, 275 hp at 3600 rpm
GEARBOX	Stern Drive
TRANSMISSION	Bravo 3 Ratio 1,65 /1
SPEED (KTS)	36

TAILORED BEST

MARINE SYSTEMS SINCE 1962

DESIGNER IN FRANCE



NANNI REFERENCES – POWER BOATS

ST 750 CN-V



SHIPYARD	HAI PHONG
TYPE	Fast carrier
LENGTH (M)	10,5
WIDTH (M)	2,76
WEIGHT (T)	4,35T
ENGINE	Z6.300, 275 hp at 3600 rpm
GEARBOX	Stern Drive
TRANSMISSION	Bravo 2 Ratio 1,81 /1
SPEED (KTS)	29

TAILORED BEST

MARINE SYSTEMS SINCE 1962

DESIGNED IN FRANCE



NANNI REFERENCES – POWER BOATS



SHIPYARD	
TYPE	Fishing Boat
LENGTH (M)	9
WIDTH (M)	
WEIGHT (T)	4
ENGINE	T4.270, 265 hp at 3600 rpm
GEARBOX	Stern Drive
TRANSMISSION	Konrad Ratio 1,974:1
SPEED (KTS)	18

POWER BOATS WATER JET

TAILORED BEST

MARINE SYSTEMS SINCE 1962

DESIGNED IN FRANCE



NANNI REFERENCES – POWER BOATS

FLYING FISH 30Z SEAWORK



SHIPYARD	HUKKELBERG BOATS
TYPE	Fishing Boat
LENGTH (M)	9
WIDTH (M)	3,25
WEIGHT (T)	33
ENGINE	2 x T4.270, 265 hp at 3600 rpm
GEARBOX	
TRANSMISSION	Hamilton Jet
SPEED (KTS)	

TAILORED BEST

MARINE SYSTEMS SINCE 1962

DESIGNED IN FRANCE

NANNI REFERENCES – POWER BOATS

IZM700-RS01



SHIPYARD	IZM
TYPE	Turkish Navy
LENGTH (M)	7
WIDTH (M)	
WEIGHT (T)	
ENGINE	T4.270, 265 hp at 3600 rpm
GEARBOX	
TRANSMISSION	Alamarin Jet AJ 245
SPEED (KTS)	36



SILLINGER 810 RIB



SHIPYARD	SILLINGER
TYPE	Military RIB
LENGTH (M)	8,14
WIDTH (M)	3
WEIGHT (T)	2,30
ENGINE	6.420 TDI, 320 hp at 3600 rpm
GEARBOX	ZF 63 Ratio 1,65 / 1
TRANSMISSION	Hamilton waterjets HJ 274
SPEED (KTS)	34

TAILORED BEST

MARINE SYSTEMS SINCE 1962

DESIGNER IN FRANCE



NANNI REFERENCES – POWER BOATS

SILLINGER 9M



SHIPYARD	SILLINGER
TYPE	Military RIB
LENGTH (M)	9,05
WIDTH (M)	3,05
WEIGHT (T)	3,37
ENGINE	6.420 TDI, 320 hp at 3600 rpm
GEARBOX	ZF 220 PL Ratio 1,4 / 1
TRANSMISSION	Hamilton waterjets HJ 274
SPEED (KTS)	34

TAILORED BEST

MARINE SYSTEMS SINCE 1962

DESIGNER IN FRANCE



NANNI REFERENCES – POWER BOATS

SKARSVAAG 28P



SHIPYARD	SKARSVAAG BOATS
TYPE	Commercial Boat
LENGTH (M)	7,99
WIDTH (M)	3,36
WEIGHT (T)	
ENGINE	T8V.350, 350 hp at 1800 rpm
GEARBOX	ZF 63R 1,25R
TRANSMISSION	Doen Jet
SPEED (KTS)	

TAILORED BEST

MARINE SYSTEMS SINCE 1962

MADE IN FRANCE



NANNI REFERENCES – POWER BOATS

ДШ630



SHIPYARD	MG BOAT
TYPE	Solas
LENGTH (M)	6,30
WIDTH (M)	
WEIGHT (T)	
ENGINE	T4.270, 265 hp at 3600 rpm
GEARBOX	
TRANSMISSION	Alamarin Jet AJ 245
SPEED (KTS)	30,8

TAILORED BEST

MARINE SYSTEMS SINCE 1962

MADE IN FRANCE



NANNI REFERENCES – POWER BOATS

POWER YACHTS

TAILORED BEST
MARINE SYSTEMS SINCE 1962



NANNI REFERENCES – POWER YACHTS

COUACH 2301 FLY PASSION



SHIPYARD	COUACH
TYPE	Pleasure Boat
LENGTH (M)	23
WIDTH (M)	
WEIGHT (T)	38
ENGINE	2 x V12-1360, 1360hp
GEARBOX	ZF 665 A Ratio 1,96
TRANSMISSION	Shaft line
SPEED (KTS)	32,3

TAILORED BEST

MARINE SYSTEMS SINCE 1952

DESIGNED IN FRANCE



NANNI REFERENCES – POWER YACHTS

COUACH 2302



SHIPYARD	COUACH
TYPE	Pleasure Boat
LENGTH (M)	23
WIDTH (M)	
WEIGHT (T)	42
ENGINE	2 x V12-1400, 1400hp
GEARBOX	ZF 665 A Ratio 1,971
TRANSMISSION	Shaft line
SPEED (KTS)	33



COUACH 2303



SHIPYARD	COUACH
TYPE	Pleasure Boat
LENGTH (M)	23
WIDTH (M)	
WEIGHT (T)	42
ENGINE	2 x V12-1400, 1400hp
GEARBOX	ZF 665 A Ratio 1,971
TRANSMISSION	Shaft line
SPEED (KTS)	33,8

COUACH 2304



SHIPYARD	COUACH
TYPE	Pleasure Boat
LENGTH (M)	23
WIDTH (M)	
WEIGHT (T)	42
ENGINE	2 x V12-1400, 1400hp
GEARBOX	ZF 665 A Ratio 1,971
TRANSMISSION	Shaft line
SPEED (KTS)	33,8

TAILORED BEST

MARINE SYSTEMS SINCE 1952

DESIGNED IN FRANCE

NANNI REFERENCES – POWER YACHTS

COUACH 2305 FLY



SHIPYARD	COUACH
TYPE	Pleasure Boat
LENGTH (M)	23
WIDTH (M)	5,60
WEIGHT (T)	
ENGINE	2 x V12-1400, 1400 hp
GEARBOX	ZF 665 A Ratio 1,96
TRANSMISSION	Shaft line
SPEED (KTS)	31

COUACH 2601 FLY



SHIPYARD	COUACH
TYPE	Pleasure Boat
LENGTH (M)	26
WIDTH (M)	
WEIGHT (T)	68
ENGINE	2 x V12-1800, 1800 hp
GEARBOX	ZF 2070A Ratio 2,46
TRANSMISSION	Shaft line
SPEED (KTS)	

TAILORED BEST

MARINE SYSTEMS SINCE 1952

DESIGNED IN FRANCE



NANNI REFERENCES – POWER YACHTS

JOHNSON 63 FLY



SHIPYARD	JOHNSON YACHTS
TYPE	Pleasure Boat
LENGTH (M)	19,80
WIDTH (M)	5,70
WEIGHT (T)	48
ENGINE	2 x I6-800, 800 hp at 2300 rpm
GEARBOX	ZF 2070A Ratio 2,46
TRANSMISSION	Shaft line
SPEED (KTS)	



OIL & GAS FAST CREW BOATS

TAILORED BEST

MARINE SYSTEMS SINCE 1962

DESIGNED IN FRANCE



NANNI REFERENCES – OIL & GAS

ARCO MARINE



SHIPYARD	ARCO MARINE NIGERIA OFFSHORE
TYPE	Oil & Gas Fast Crew Boat
LENGTH (M)	26M
WIDTH (M)	
WEIGHT (T)	
ENGINE	3 x D2842 LE 405, 900 hp at 2100 rpm
GEARBOX	ZF 665 A
TRANSMISSION	Jet
SPEED (KTS)	30

TAILORED BEST

MARINE SYSTEMS SINCE 1952

DESIGNER IN FRANCE



NANNI REFERENCES – OIL & GAS

COMBI 6030



SHIPYARD	PETRO SERVICE OFFSHORE
TYPE	Oil & Gas Fast Crew Boat
LENGTH (M)	19M
WIDTH (M)	5
WEIGHT (T)	
ENGINE	2 x D2842 LE 405, 900 hp at 2100 rpm
GEARBOX	ZF 665 A
TRANSMISSION	Jet
SPEED (KTS)	30

TAILORED BEST

MARINE SYSTEMS SINCE 1962

DESIGNER IN FRANCE



NANNI REFERENCES – OIL & GAS

MAMOLINO



SHIPYARD	OCEA / PROMAR
TYPE	Oil & Gas Fast Crew Boat
LENGTH (M)	19,77
WIDTH (M)	5
WEIGHT (T)	
ENGINE	2 x D2842 LE 405, 900 hp at 2100 rpm
GEARBOX	ZF 665 A
TRANSMISSION	Jet
SPEED (KTS)	30

TAILORED BEST

MARINE SYSTEMS SINCE 1962

DESIGNER IN FRANCE



NANNI REFERENCES – OIL & GAS

SURFER 19000



SHIPYARD	ALLAIS / BOURBON
TYPE	Oil & Gas Fast Crew Boat
LENGTH (M)	19
WIDTH (M)	4,93
WEIGHT (T)	
ENGINE	2 x D2842 LE 405, 900 hp at 2100 rpm
GEARBOX	ZF 665 A
TRANSMISSION	Jet
SPEED (KTS)	30

TAILORED BEST

MARINE SYSTEMS SINCE 1952

DESIGNER IN FRANCE



NANNI REFERENCES – OIL & GAS

DEFENSE

TAILORED BEST

MARINE SYSTEMS SINCE 1962

DESIGNED IN FRANCE



NANNI REFERENCES – DEFENSE

DRIX XBLUE



SHIPYARD	H2X
TYPE	Surface Vessel
LENGTH (M)	7,7
WIDTH (M)	0,7
WEIGHT (T)	
ENGINE	N4.38, 37,5 hp at 3000 rpm
GEARBOX	ZF 25A Ratio 2,7
TRANSMISSION	Shaft line
SPEED (KTS)	

TAILORED BEST

MARINE SYSTEMS SINCE 1962

DESIGNED IN FRANCE



NANNI REFERENCES – DEFENSE

PILOTES DU HAVRE



SHIPYARD	SIBIRIL TECHNOLOGIES
TYPE	Defense
LENGTH (M)	15,56
WIDTH (M)	4,80
WEIGHT (T)	
ENGINE	2 x D2876 LE407, 500 hp at 1800 rpm
GEARBOX	ZF 550IV Ratio 1,52
TRANSMISSION	Shaft line
SPEED (KTS)	25

TAILORED BEST

MARINE SYSTEMS SINCE 1962

DESIGNER IN FRANCE



NANNI REFERENCES – DEFENSE

RPB 20



SHIPYARD	RAIDCO
TYPE	Defense
LENGTH (M)	20
WIDTH (M)	5,29
WEIGHT (T)	
ENGINE	2 x D2842 LE413, 1000 hp at 2100 rpm
GEARBOX	Twindisc
TRANSMISSION	Shaft line
SPEED (KTS)	28-33

TAILORED BEST

MARINE SYSTEMS SINCE 1962

DESIGNER IN FRANCE



NANNI REFERENCES – DEFENSE

RPB 33



SHIPYARD	UFAST
TYPE	Defense
LENGTH (M)	32,54
WIDTH (M)	6,53
WEIGHT (T)	
ENGINE	2 x D2842 LE410, 1100 hp at 2100 rpm
GEARBOX	ZF 2050, Ratio 2,5
TRANSMISSION	Shaft line
SPEED (KTS)	28-30

TAILORED BEST

MARINE SYSTEMS SINCE 1952

MADE IN FRANCE



NANNI REFERENCES – DEFENSE

SERVICES

TAILORED BEST

MARINE SYSTEMS SINCE 1962

MADE IN FRANCE



NANNI REFERENCES – SERVICES

ATLANTIDE



SHIPYARD	
TYPE	Passengers Boat
LENGTH (M)	25
WIDTH (M)	10
WEIGHT (T)	65
ENGINE	2 x D2842 LE410, 1100hp at 2100 rpm
GEARBOX	ZF 2550, Ratio 2,75 (free standing)
TRANSMISSION	Surface drive Arneson
SPEED (KTS)	20

TAILORED BEST

MARINE SYSTEMS SINCE 1962

DESIGNÉ EN FRANCE

NANNI REFERENCES – SERVICES

AUSTRALIAN COMMERCIAL VESSEL



SHIPYARD	
TYPE	Commercial Vessel
LENGTH (M)	32,54
WIDTH (M)	6,53
WEIGHT (T)	
ENGINE	2 x N9.430, 430 hp at 2300 rpm
GEARBOX	
TRANSMISSION	Shaft line
SPEED (KTS)	

TAILORED BEST

MARINE SYSTEMS SINCE 1952

DESIGNER IN FRANCE



NANNI REFERENCES – DEFENSE

CNB PRO 20 HYBRID



SHIPYARD	CNB
TYPE	Passengers Boat
LENGTH (M)	20,86 m
WIDTH (M)	5,80
WEIGHT (T)	42
ENGINE	2 x V8-800, 800hp
GEARBOX	ZF 2000, Ratio 2,276 (free standing)
TRANSMISSION	Shaft line
SPEED (KTS)	20

TAILORED BEST

MARINE SYSTEMS SINCE 1962

DESIGNER IN FRANCE



NANNI REFERENCES – SERVICES

SCANDOLA



SHIPYARD	
TYPE	Passengers Boat
LENGTH (M)	23
WIDTH (M)	
WEIGHT (T)	
ENGINE	2 x D2676 LE422, 650 hp at 2100 RPM
GEARBOX	
TRANSMISSION	Shaft line
SPEED (KTS)	20

TAILORED BEST

MARINE SYSTEMS SINCE 1952

DESIGNER IN FRANCE



NANNI REFERENCES – SERVICES

U SALECCIA



SHIPYARD	
TYPE	Passengers Boat
LENGTH (M)	
WIDTH (M)	
WEIGHT (T)	
ENGINE	2 x D2676 LE422, 650 hp at 2100 RPM
GEARBOX	
TRANSMISSION	Shaft line
SPEED (KTS)	20

VILLE DE PORTO



SHIPYARD	
TYPE	Passengers Boat
LENGTH (M)	19
WIDTH (M)	
WEIGHT (T)	
ENGINE	2 x D2676 LE425, 650 hp at 2100 RPM
GEARBOX	
TRANSMISSION	Shaft line
SPEED (KTS)	20

TAILORED BEST

MARINE SYSTEMS SINCE 1952

DESIGNER IN FRANCE



NANNI REFERENCES – SERVICES

WIND FARM



SHIPYARD	PIRIOU
TYPE	Support Vessel
LENGTH (M)	27,40
WIDTH (M)	8
WEIGHT (T)	
ENGINE	2 x D2862 LE463, 1400 hp at 2100 rpm
GEARBOX	REINJTES WVS 430/1, Ratio 2,154
TRANSMISSION	Shaft line
SPEED (KTS)	27,5

TAILORED BEST

MARINE SYSTEMS SINCE 1962

DESIGNER IN FRANCE



NANNI REFERENCES – SERVICES

SAILING BOATS

TAILORED BEST
MARINE SYSTEMS SINCE 1962



NANNI REFERENCES – SAILING BOATS

FIGARO BENETEAU 3



SHIPYARD	BENETEAU
TYPE	Sailing Boat
LENGTH (M)	9,75
WIDTH (M)	3,47
WEIGHT (T)	2,9
ENGINE	N3.21, 19,6 hp at 3600 rpm with Additional Alternator 12V - 120 A
GEARBOX	Shaft line
TRANSMISSION	TMC 40 Ratio 2,6/1
SPEED (KTS)	7,6

TAILORED BEST

MARINE SYSTEMS SINCE 1952

MADE IN FRANCE



NANNI REFERENCES – SAILING BOATS

LAGOON SEVEN 7



SHIPYARD	CNB LAGOON
TYPE	Sailing Boat
LENGTH (M)	23,47
WIDTH (M)	-
WEIGHT (T)	-
ENGINE	N5.230, 228 hp at 2600 rpm
GEARBOX	Sail Drive
TRANSMISSION	ZF 85 A
SPEED (KTS)	-

Y7



SHIPYARD	Y YACHTS (MS YACHTBAU)
TYPE	Sailing Boat
LENGTH (M)	21,68
WIDTH (M)	5,75
WEIGHT (T)	9
ENGINE	2 x N4.80, 72 hp at 2700 rpm
GEARBOX	Sail Drive
TRANSMISSION	ZF 25A or SD12 twin installation
SPEED (KTS)	13

TAILORED BEST

MARINE SYSTEMS SINCE 1952

MADE IN FRANCE



NANNI REFERENCES – SAILING BOATS

AZZURO 47



SHIPYARD	ALLIAGE
TYPE	Sailing Boat
LENGTH (M)	14,95
WIDTH (M)	4,40
WEIGHT (T)	13,69
ENGINE	N4.60, 60 hp at 2800 rpm
GEARBOX	Sail Drive
TRANSMISSION	SD 10 Ratio 2,16/1
SPEED (KTS)	8,7

TAILORED BEST

MARINE SYSTEMS SINCE 1952

DESIGNER IN FRANCE



NANNI REFERENCES – SAILING BOATS

AZZURO 53



SHIPYARD	ALLIAGE
TYPE	Sailing Boat
LENGTH (M)	16,98
WIDTH (M)	4,82
WEIGHT (T)	16,50
ENGINE	N4.100, 100 hp at 2800 rpm
GEARBOX	Shaft line
TRANSMISSION	TM 345 A Ratio 2/1
SPEED (KTS)	8,6

TAILORED BEST

MARINE SYSTEMS SINCE 1962

DESIGNER IN FRANCE



NANNI REFERENCES – SAILING BOATS

AZZURO 56



SHIPYARD	ALLIAGE
TYPE	Sailing Boat
LENGTH (M)	17,80
WIDTH (M)	5,25
WEIGHT (T)	26
ENGINE	N4.115, 115 hp at 2600 rpm
GEARBOX	ZF 45 A Ratio 2,43/1
TRANSMISSION	Sail Drive
SPEED (KTS)	9,2

A31



SHIPYARD	ARCHAMBAULT
TYPE	Sailing Boat
LENGTH (M)	9,55
WIDTH (M)	3,23
WEIGHT (T)	3,35
ENGINE	N2.14, 14 hp at 3600 rpm
GEARBOX	Sail Drive
TRANSMISSION	SD 10 Ratio 2,52/1
SPEED (KTS)	6,8



A35



SHIPYARD	ARCHAMBAULT
TYPE	Sailing Boat
LENGTH (M)	10,59
WIDTH (M)	3,55
WEIGHT (T)	4,64
ENGINE	N3.21, 21 hp at 3600 rpm
GEARBOX	Sail Drive
TRANSMISSION	SD 10 Ratio 2,52/1
SPEED (KTS)	7,3

TAILORED BEST

MARINE SYSTEMS SINCE 1952

DESIGNER IN FRANCE



NANNI REFERENCES – SAILING BOATS

A 40 RC



SHIPYARD	ARCHAMBAULT
TYPE	Sailing Boat
LENGTH (M)	11,95
WIDTH (M)	3,75
WEIGHT (T)	7,07
ENGINE	N4.38, 37,5 hp at 3000 rpm
GEARBOX	Sail Drive
TRANSMISSION	SD 10 Ratio 2,16/1
SPEED (KTS)	8,5

TAILORED BEST

MARINE SYSTEMS SINCE 1952

DESIGNER IN FRANCE

NANNI REFERENCES – SAILING BOATS

BALT 27



SHIPYARD	DALT YACHT
TYPE	Sailing Boat
LENGTH (M)	8,15
WIDTH (M)	2,53
WEIGHT (T)	2,7
ENGINE	N2.10, 10 hp at 3000 rpm
GEARBOX	Shaft line
TRANSMISSION	TMC 40 Ratio 2,6/1
SPEED (KTS)	-



BALI 4.0



SHIPYARD	CATANA
TYPE	Sailing Boat
LENGTH (M)	11,93
WIDTH (M)	6,72
WEIGHT (T)	8,6
ENGINE	2 x N3.21, 21 hp at 3600 rpm
GEARBOX	Sail Drive
TRANSMISSION	SP 60 Ratio 2,15/1
SPEED (KTS)	-

TAILORED BEST

MARINE SYSTEMS SINCE 1952

MADE IN FRANCE



NANNI REFERENCES – SAILING BOATS

BALI 4.3



SHIPYARD	CATANA
TYPE	Sailing Boat
LENGTH (M)	13,10
WIDTH (M)	7,12
WEIGHT (T)	11,3
ENGINE	2 x N4.40, 40 hp at 2800 rpm 2 x N4.50, 50 hp at 2800 rpm
GEARBOX	Sail Drive
TRANSMISSION	SP 60 Ratio 2,15/1
SPEED (KTS)	9

TAILORED BEST

MARINE SYSTEMS SINCE 1952

MADE IN FRANCE



NANNI REFERENCES – SAILING BOATS

BALI 4.5



SHIPYARD	CATANA
TYPE	Sailing Boat
LENGTH (M)	13,10
WIDTH (M)	7,12
WEIGHT (T)	11,3
ENGINE	2 x N4.50, 50 hp at 2800 rpm
GEARBOX	Sail Drive
TRANSMISSION	SP 60 Ratio 2,15/1
SPEED (KTS)	9

TAILORED BEST

MARINE SYSTEMS SINCE 1952

MADE IN FRANCE



NANNI REFERENCES – SAILING BOATS

BÔ 28



SHIPYARD	BONNIN
TYPE	Sailing Boat
LENGTH (M)	8,50
WIDTH (M)	2,6
WEIGHT (T)	-
ENGINE	N3.21, 21 hp at 3600 rpm
GEARBOX	Shaft line
TRANSMISSION	TMC 40 Ratio 2/1
SPEED (KTS)	-



BOREAL 44



SHIPYARD	BOREAL
TYPE	Sailing Boat
LENGTH (M)	13,80
WIDTH (M)	4,30
WEIGHT (T)	3,8
ENGINE	N4.60, 60 hp at 2800 rpm
GEARBOX	Sail Drive
TRANSMISSION	ZF 25 Ratio 2,23/1
SPEED (KTS)	-



BOREAL 47



SHIPYARD	BOREAL
TYPE	Sailing Boat
LENGTH (M)	14,55
WIDTH (M)	4,30
WEIGHT (T)	3,8
ENGINE	N4.60, 60 hp at 2800 rpm
GEARBOX	Sail Drive
TRANSMISSION	ZF 25 Ratio 2,23/1
SPEED (KTS)	-



BOREAL 52



SHIPYARD	BOREAL
TYPE	Sailing Boat
LENGTH (M)	15,86
WIDTH (M)	4,65
WEIGHT (T)	4,8
ENGINE	N4.85, 85 hp at 2800 rpm
GEARBOX	Sail Drive
TRANSMISSION	ZF 25 Ratio 2,3/1
SPEED (KTS)	-

BOREAL 55



SHIPYARD	BOREAL
TYPE	Sailing Boat
LENGTH (M)	16,40
WIDTH (M)	4,65
WEIGHT (T)	4,8
ENGINE	N4.85, 85 hp at 2800 rpm
GEARBOX	Sail drive
TRANSMISSION	ZF 25 Ratio 2,3/1
SPEED (KTS)	-

BOREAL 63



SHIPYARD	BOREAL
TYPE	Sailing Boat
LENGTH (M)	-
WIDTH (M)	-
WEIGHT (T)	-
ENGINE	N4.100, 100 hp at 2800 rpm
GEARBOX	Sail Drive
TRANSMISSION	ZF 25 Ratio 2/1
SPEED (KTS)	-

TAILORED BEST

MARINE SYSTEMS SINCE 1952

DESIGNED IN FRANCE



NANNI REFERENCES – SAILING BOATS

BOREAL 78



SHIPYARD	BOREAL
TYPE	Sailing Boat
LENGTH (M)	23,95
WIDTH (M)	6,35
WEIGHT (T)	4
ENGINE	N4.100, 100 hp at 2800 rpm
GEARBOX	Sail Drive
TRANSMISSION	ZF 25 Ratio 2/1
SPEED (KTS)	-



CAPE COD



SHIPYARD	ROSEWEST
TYPE	Sailing Boat
LENGTH (M)	8,96
WIDTH (M)	2,73
WEIGHT (T)	1,45
ENGINE	N2.14, 14 hp at 3600 rpm
GEARBOX	Shaft line
TRANSMISSION	TMC 40 Ratio 2,6/1
SPEED (KTS)	-



DEHLER 29



SHIPYARD	HANSE GROUP
TYPE	Sailing Boat
LENGTH (M)	8,75
WIDTH (M)	2,99
WEIGHT (T)	3,7
ENGINE	N3.21, 21 hp at 3600 rpm
GEARBOX	Sail Drive SP 60
TRANSMISSION	
SPEED (KTS)	

TAILORED BEST

MARINE SYSTEMS SINCE 1952

DESIGNER IN FRANCE



NANNI REFERENCES – SAILING BOATS

DEHLER 30



SHIPYARD	HANSE GROUP
TYPE	Sailing Boat
LENGTH (M)	10,30
WIDTH (M)	3,25
WEIGHT (T)	2,8
ENGINE	N2,10, 10 hp at 3000 rpm
GEARBOX	Retractable Shaft line
TRANSMISSION	
SPEED (KTS)	



DELPHIA 29



SHIPYARD	DELPHIA
TYPE	Sailing Boat
LENGTH (M)	9,15
WIDTH (M)	2,93
WEIGHT (T)	3,4
ENGINE	N3.21, 21 hp at 3600 rpm
GEARBOX	Shaft line
TRANSMISSION	TMC 40 Ratio 2,6/1
SPEED (KTS)	-



DELPHIA 31



SHIPYARD	DELPHIA
TYPE	Sailing Boat
LENGTH (M)	9,78
WIDTH (M)	3,40
WEIGHT (T)	4,68
ENGINE	N3.30, 29 hp at 3600 rpm
GEARBOX	Sail Drive
TRANSMISSION	SP 60 Ratio 2,38/1
SPEED (KTS)	-

TAILORED BEST

MARINE SYSTEMS SINCE 1962

DESIGNER IN FRANCE



NANNI REFERENCES – SAILING BOATS

DELPHIA 34



SHIPYARD	DELPHIA
TYPE	Sailing Boat
LENGTH (M)	10,35
WIDTH (M)	3,47
WEIGHT (T)	5
ENGINE	N3.30, 29 hp at 3600 rpm
GEARBOX	Shaft line
TRANSMISSION	TMC 40 Ratio 2,6/1
SPEED (KTS)	-

DELPHIA 40.3



SHIPYARD	DELPHIA
TYPE	Sailing Boat
LENGTH (M)	11,95
WIDTH (M)	3,94
WEIGHT (T)	8,85
ENGINE	N4.38, 37,5 hp at 3000 rpm N4.50, 50 hp at 2800 rpm
GEARBOX	Shaft line
TRANSMISSION	TTMC 35P Ratio 2,61/1 TTMC 35A Ratio 2,64/1
SPEED (KTS)	-

TAILORED BEST

MARINE SYSTEMS SINCE 1952

DESIGNER IN FRANCE



NANNI REFERENCES – SAILING BOATS

IMOCA 60



SHIPYARD	
TYPE	Racing Boat
LENGTH (M)	18,28
WIDTH (M)	5,85
WEIGHT (T)	8
ENGINE	N4.38, 37,5 hp at 3000 rpm
GEARBOX	Shaft line
TRANSMISSION	
SPEED (KTS)	

TAILORED BEST

MARINE SYSTEMS SINCE 1952

DESIGNER IN FRANCE



NANNI REFERENCES – SAILING BOATS

MAXUS 28



SHIPYARD	NORTHMAN
TYPE	Sailing Boat
LENGTH (M)	8,50
WIDTH (M)	2,95
WEIGHT (T)	3
ENGINE	N3.21, 21 hp at 3600 rpm
GEARBOX	Shaft line
TRANSMISSION	TMC 40 Ratio 2,6/1
SPEED (KTS)	-



MAXUS 33.1 RS



SHIPYARD	NORTHMAN
TYPE	Sailing Boat
LENGTH (M)	10,45
WIDTH (M)	3,20
WEIGHT (T)	4,5
ENGINE	N2.14, 14 hp at 3600 rpm N3.21, 21 hp at 3600 rpm
GEARBOX	Shaft line
TRANSMISSION	TMC 40 Ratio 2,6/1
SPEED (KTS)	-

MULTI 50



SHIPYARD	ENATA
TYPE	Sailing Boat
LENGTH (M)	15,24
WIDTH (M)	15,24
WEIGHT (T)	3,8
ENGINE	N4.38, 37,5 hp at 3000 rpm
GEARBOX	Shaft line
TRANSMISSION	
SPEED (KTS)	

NAUTOR SWAN 40



SHIPYARD	NAUTOR SWAN
TYPE	Sailing Boat
LENGTH (M)	9,75
WIDTH (M)	3,93
WEIGHT (T)	-
ENGINE	N4.38, 37,5 hp at 3000 rpm
GEARBOX	Sail Drive
TRANSMISSION	ZF 15 MA / 2.63 R
SPEED (KTS)	-



PROWLER 40 OPEN



SHIPYARD	MULTIHULLS D.O.O.
TYPE	Passenger Boat
LENGTH (M)	12
WIDTH (M)	4,60
WEIGHT (T)	3,8
ENGINE	N4.80, 79 hp at 2700 rpm
GEARBOX	Shaftline
TRANSMISSION	TM 345A Ratio 2,1
SPEED (KTS)	20

TAILORED BEST

MARINE SYSTEMS SINCE 1962

DESIGNER IN FRANCE



NANNI REFERENCES – SAILING BOATS

RUSTLER 33



SHIPYARD	RUSTLER YACHTS
TYPE	Sailing Boat
LENGTH (M)	10,36
WIDTH (M)	6,85
WEIGHT (T)	2,7
ENGINE	N2.14, 14 hp at 3600 rpm
GEARBOX	Sail Drive
TRANSMISSION	SP 60 Ratio 2,38/1
SPEED (KTS)	-

TAILORED BEST

MARINE SYSTEMS SINCE 1962

DESIGNER IN FRANCE



NANNI REFERENCES – SAILING BOATS

RUSTLER 42



SHIPYARD	RUSTLER YACHTS
TYPE	Sailing Boat
LENGTH (M)	12,81
WIDTH (M)	4,06
WEIGHT (T)	4,67
ENGINE	N4.50, 50 hp at 2800 rpm
GEARBOX	Shaft line
TRANSMISSION	TM 345 Ratio 2/1
SPEED (KTS)	-



RUSTLER 44



SHIPYARD	RUSTLER YACHTS
TYPE	Sailing Boat
LENGTH (M)	13,5
WIDTH (M)	4,28
WEIGHT (T)	4,9
ENGINE	N4.85, 85 hp at 2800 rpm
GEARBOX	Shaft line
TRANSMISSION	TM 345 Ratio 2/1
SPEED (KTS)	-

SOLENN DAY 23



SHIPYARD	FRANCK ROY
TYPE	Sailing Boat
LENGTH (M)	6,98
WIDTH (M)	2,51
WEIGHT (T)	1,27
ENGINE	N2.10, 10 hp at 3000 rpm
GEARBOX	Shaft line
TRANSMISSION	TMC 40 Ratio 2/1
SPEED (KTS)	-

TAILORED BEST

MARINE SYSTEMS SINCE 1962

MADE IN FRANCE



NANNI REFERENCES – SAILING BOATS

SOLENN DAY 27



SHIPYARD	FRANCK ROY
TYPE	Sailing Boat
LENGTH (M)	8,2
WIDTH (M)	2,51
WEIGHT (T)	1,3
ENGINE	N2.10, 10 hp at 3000 rpm
GEARBOX	Shaft line
TRANSMISSION	TMC 40 Ratio 2/1
SPEED (KTS)	-



SOLENN 32



SHIPYARD	FRANCK ROY
TYPE	Sailing Boat
LENGTH (M)	9,9
WIDTH (M)	2,75
WEIGHT (T)	2,41
ENGINE	N2.10, 10 hp at 3000 rpm N2.14, 14 hp at 3600 rpm
GEARBOX	Shaft line or Sail Drive
TRANSMISSION	TMC 40 Ratio 2/1 SP 60 Ratio 2,38/1
SPEED (KTS)	-

TAILORED BEST

MARINE SYSTEMS SINCE 1952

MADE IN FRANCE



NANNI REFERENCES – SAILING BOATS

SOLENN 42



SHIPYARD	FRANCK ROY
TYPE	Sailing Boat
LENGTH (M)	13
WIDTH (M)	3,65
WEIGHT (T)	6
ENGINE	N3.30, 29 hp at 3600 rpm
GEARBOX	Sail Drive
TRANSMISSION	SP 60 Ratio 2,38/1
SPEED (KTS)	-



TI'BAC



SHIPYARD	BONNIN
TYPE	Sailing Boat
LENGTH (M)	7,5
WIDTH (M)	2,48
WEIGHT (T)	0,95
ENGINE	N2.14, 14 hp at 3600 rpm
GEARBOX	Shaft line
TRANSMISSION	TMC 40 Ratio 2/1
SPEED (KTS)	-

TAILORED BEST

MARINE SYSTEMS SINCE 1962

DESIGNER IN FRANCE



NANNI REFERENCES – SAILING BOATS

TOFINOU 8



SHIPYARD	LATITUDE 46
TYPE	Sailing Boat
LENGTH (M)	8
WIDTH (M)	2,53
WEIGHT (T)	0,7
ENGINE	N2.10, 10 hp at 3000 rpm
GEARBOX	Shaft line or Sail Drive
TRANSMISSION	TMC 40 Ratio 2/1 or SP60 2,38R
SPEED (KTS)	-

TAILORED BEST

MARINE SYSTEMS SINCE 1962

DESIGNER IN FRANCE



NANNI REFERENCES – SAILING BOATS

TOFINOU 12



SHIPYARD	LATITUDE 46
TYPE	Sailing Boat
LENGTH (M)	11,99
WIDTH (M)	3,20
WEIGHT (T)	1,4
ENGINE	N3.30, 29 hp at 3600 rpm
GEARBOX	Sail Drive
TRANSMISSION	SP 60 Ratio 2,38/1
SPEED (KTS)	-

TAILORED BEST

MARINE SYSTEMS SINCE 1952

MADE IN FRANCE



NANNI REFERENCES – SAILING BOATS

TOFINOU 16



SHIPYARD	LATITUDE 46
TYPE	Sailing Boat
LENGTH (M)	15,9
WIDTH (M)	14
WEIGHT (T)	3,5
ENGINE	N4.60, 60 hp at 2800 rpm
GEARBOX	Sail Drive
TRANSMISSION	SP 60 Ratio 2,38/1
SPEED (KTS)	-

TAILORED BEST

MARINE SYSTEMS SINCE 1952

MADE IN FRANCE



NANNI REFERENCES – SAILING BOATS

GENSETS

TAILORED BEST

MARINE SYSTEMS SINCE 1962

DESIGNED IN FRANCE



NANNI REFERENCES – GENSETS

APAK TRAWLERS



GENSET MODEL	QLS102T
BOAT	Trawler
LENGTH (M)	
WIDTH (M)	
WEIGHT (T)	
GENSET (kW)	QLS 102T – 98,4 kW

TAILORED BEST

MARINE SYSTEMS SINCE 1952

MADE IN FRANCE



NANNI REFERENCES – GENSET

BORDER SECURITY FORCES INDIA (10 boats)



GENSET MODEL	QLS47T
BOAT	Border Security Forces
LENGTH (M)	20
WIDTH (M)	5
WEIGHT (T)	47
GENSET (kW)	2 x QLS 47T – 37,8 kW



CREW BOAT OIL&GAS INDUSTRY IN MIDDLE EAST AND GUINEAN GULF (100 units)



GENSET MODEL	QLS22T
BOAT	
LENGTH (M)	
WIDTH (M)	
WEIGHT (T)	
GENSET (kW)	2 x QLS 22T – 17,7 kW



DIVERSE MARINE



GENSET MODEL	QMS16M / QMS7,5M
BOAT	Offshore Wind Industry
LENGTH (M)	
WIDTH (M)	
WEIGHT (T)	
GENSET (kW)	QMS 16m – 16,2 kW with soundshield QMS 7,5M -7,5 kW with soundshield

TAILORED BEST

MARINE SYSTEMS SINCE 1952

MADE IN FRANCE

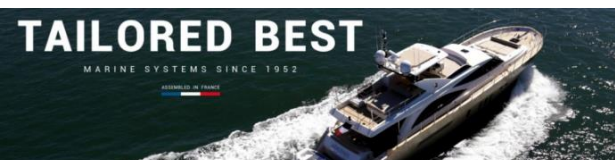


NANNI REFERENCES – GENSET

FISHING BOAT APPLICATION IN FINLAND



GENSET MODEL	QLS47T
BOAT	
LENGTH (M)	
WIDTH (M)	
WEIGHT (T)	
GENSET (kW)	



FISH FARMING FAROE ISLANDS



GENSET MODEL	QLS65T
BOAT	Fish Farming Boat
LENGTH (M)	
WIDTH (M)	
WEIGHT (T)	
GENSET (kW)	QLS 65T – 57,2 kW

TAILORED BEST

MARINE SYSTEMS SINCE 1952

ASSEMBLED IN FRANCE



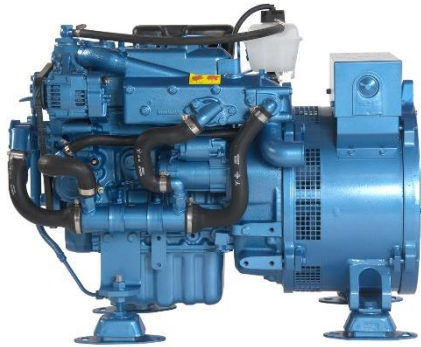
NANNI REFERENCES – GENSET

PASSENGER FERRY TUNISIA (fleet of 6 boats)



GENSET MODEL	QLS22T
BOAT	EL JORF
LENGTH (M)	40
WIDTH (M)	15
WEIGHT (T)	100
GENSET (kW)	2 x QLS 22T – 17,7 kW

RIVER PROJECT FOR BANGLADESH GOVERNMENT



GENSET MODEL	QMS7.5M
BOAT	Crane Boats
LENGTH (M)	
WIDTH (M)	
WEIGHT (T)	
GENSET (kW)	QMS 7,5M -7,5 kW

TAILORED BEST

MARINE SYSTEMS SINCE 1952

MADE IN FRANCE



NANNI REFERENCES – GENSET

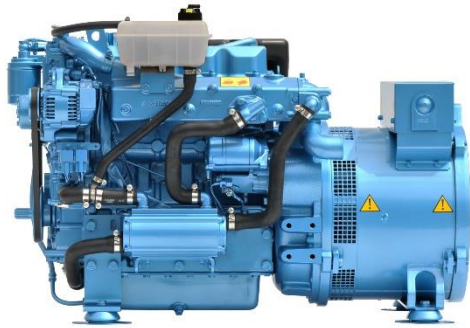
ROSMAN FERRIES AUSTRALIA



GENSET MODEL	QMS7.5M / QMS16M
BOAT	Passengers Boat
LENGTH (M)	
WIDTH (M)	
WEIGHT (T)	
GENSET (kW)	QMS 7,5M -7,5 kW QMS 16m – 16,2 kW



RIVER PROJECT FOR BANGLADESH GOVERNMENT



GENSET MODEL	QMS22T
BOAT	Tugboats
LENGTH (M)	
WIDTH (M)	
WEIGHT (T)	
GENSET (kW)	QMS 22T – 17,6 kW



OIL & GAS APPLICATION IN VENEZUELA



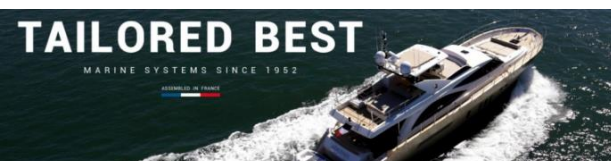
GENSET	QLS12T60
BOAT	
LENGTH (M)	
WIDTH (M)	
WEIGHT (T)	
GENSET (kW)	



RIVER PROJECT FOR BANGLADESH GOVERNMENT



GENSET MODEL	QMS75T
BOAT	Barge
LENGTH (M)	
WIDTH (M)	
WEIGHT (T)	
GENSET (kW)	QMS 75T – 60 kW



FISHING BOAT IN CANADA



GENSET MODEL	QMS150T60
BOAT	Atlantic Voyager - Fishing Vessel
LENGTH (M)	24,4
WIDTH (M)	
WEIGHT (T)	
GENSET (kW)	2 x QMS 150T60 -150kw

TAILORED BEST

MARINE SYSTEMS SINCE 1952

MADE IN FRANCE



NANNI REFERENCES – GENSET

FISHING BOAT FOR CANADA BUILT IN VIETNAM



GENSET MODEL	QMS240T60
BOAT	
LENGTH (M)	
WIDTH (M)	
WEIGHT (T)	
GENSET (kW)	



SOLAS BOATS

TAILORED BEST

MARINE SYSTEMS SINCE 1962

MADE IN FRANCE



NANNI REFERENCES – GENSETS

FRR 6.1



SHIPYARD	FASSMER
TYPE	Rescue Boat
LENGTH (M)	
WIDTH (M)	
WEIGHT (T)	
ENGINE	T4.180, 180 hp at 3400 rpm
GEARBOX	
TRANSMISSION	Shaft line
SPEED (KTS)	



RR 4.5 ID



SHIPYARD	FASSMER
TYPE	Solas Boat
LENGTH (M)	
WIDTH (M)	
WEIGHT (T)	
ENGINE	
GEARBOX	
TRANSMISSION	Shaft line
SPEED (KTS)	

TAILORED BEST

MARINE SYSTEMS SINCE 1962

DESIGNER IN FRANCE



NANNI REFERENCES – SOLAS



SHIPYARD	FASSMER
TYPE	Solas Boat
LENGTH (M)	
WIDTH (M)	
WEIGHT (T)	
ENGINE	
GEARBOX	
TRANSMISSION	Shaft line
SPEED (KTS)	





SHIPYARD	GEPA
TYPE	Solas Boat
LENGTH (M)	
WIDTH (M)	
WEIGHT (T)	
ENGINE	N4.38, 37,5 hp at 3000 rmp
GEARBOX	
TRANSMISSION	Shaft line
SPEED (KTS)	



GREBEN



SHIPYARD	GREBEN
TYPE	Rescue Boat
LENGTH (M)	
WIDTH (M)	
WEIGHT (T)	
ENGINE	T4.200, 200 hpat 3600 rpm
GEARBOX	
TRANSMISSION	Shaft line
SPEED (KTS)	

TAILORED BEST

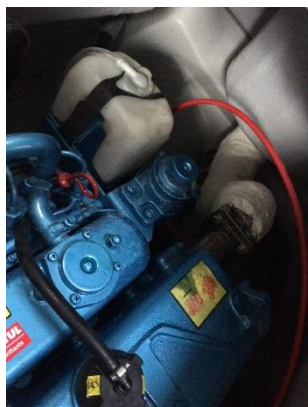
MARINE SYSTEMS SINCE 1962

DESIGNER IN FRANCE



NANNI REFERENCES – SOLAS

GREBEN



SHIPYARD	GREBEN
TYPE	Solas Boat
LENGTH (M)	
WIDTH (M)	
WEIGHT (T)	
ENGINE	N3.30, 29 hp at 3600 rpm
GEARBOX	
TRANSMISSION	Shaft line
SPEED (KTS)	

TAILORED BEST

MARINE SYSTEMS SINCE 1952

DESIGNED IN FRANCE



NANNI REFERENCES – SOLAS



SHIPYARD	SCHAT HARDING
TYPE	Solas Boat
LENGTH (M)	
WIDTH (M)	
WEIGHT (T)	
ENGINE	N4.85, 85 hp at 2800 rpm N4.60, 60 hp at 2800 rpm
GEARBOX	
TRANSMISSION	Shaft line
SPEED (KTS)	





SHIPYARD	HATECKE
TYPE	Fast Rescue Boat
LENGTH (M)	6
WIDTH (M)	
WEIGHT (T)	
ENGINE	T4.270, 265 hp at 3600 rmp
GEARBOX	
TRANSMISSION	Jet Alamarin 245
SPEED (KTS)	

SEL 12.5M



SHIPYARD	FASSMER
TYPE	SOLAS Boat
LENGTH (M)	12,50
WIDTH (M)	5,20
WEIGHT (T)	36,0
ENGINE	2X N4.38, 37,5 hp at 3000 rpm
GEARBOX	ZF 12 Ratio 2,63 / 1
TRANSMISSION	Shaft line
SPEED (KTS)	7,0

